

T-DRILL

T-65 FOR STAINLESS STEEL PIPES

Heavy Duty Collaring Machine



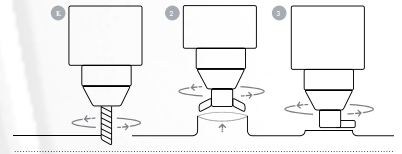
UP TO SCH10



IT'S THE TOOLS

THAT SAY HOW GOOD YOU ARE.

T-65 SS



T-65 Stainless Steel

The T-DRILL T-65 SS is a portable, easy-to-use collaring machine for stainless steel tube. It is an ideal solution for making reducing tee joints in main run tube.

While giving you comparable quality to a commercial tee fitting, your profit will increase since T-65 SS eliminates two welded joints and fitting cost.



DO IT WITH T-DRILL

CUT COSTS - IMPROVE QUALITY - INCREASE PROFIT.

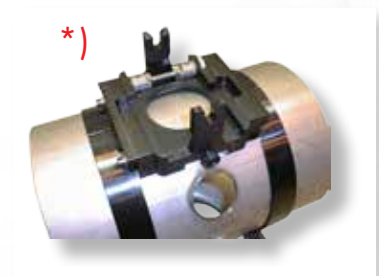
- Only one welded joint
- No pipe cutting
- No T-fitting
- TEE ratio variation flexibility
- Less chance for leaks or call-backs
- Minimized inspection cost
- Improved flow characteristics
- No costly T-fitting inventories



T-65 SS Capacity

		Branch tube diameter					
		17.2	21.3	26.9	33.7	42.4	48.3
Run tube diameter	mm	17.2	21.3	26.9	33.7	42.4	48.3
	33.7	2.0	2.77	2.77	1.6	-	-
	42.4	2.0	2.77	2.77	2.77	1.6	-
	48.3	2.0	2.77	2.77	2.77	2.77	1.6
	60.3	2.0	2.77	2.77	2.77	2.77	2.77
	76.1	2.0	3.05	3.05	3.05	3.05	3.05
	88.9	2.0	3.05	3.05	3.05	3.05	3.05
	114.3	2.0	3.05	3.05	3.05	3.05	3.05
≤ 300	With optional clamping system*						

t = max. wall thickness of stainless steel pipe in mm



MANUFACTURER:

REPRESENTED BY:

T-DRILL

T-DRILL OY
 P.O.Box 20, FIN-66401 LAIHIA, Finland
 Tel. +358 6 475 3333
 Telefax +358 6 475 3300
 e-mail: sales@t-drill.fi
 www.t-drill.fi