

# T-DRILL

T-65 & T-65B

Heavy duty tee forming machines

**NEW!**



**IT'S THE TOOLS**  
THAT SAY HOW GOOD YOU ARE.

# T-65 HEAVY DUTY TEE FORMING MACHINE

## DO IT WITH T-DRILL

CUT COSTS - IMPROVE QUALITY - INCREASE PROFIT.

- Only one brazed joint
- No pipe cutting
- No T-fittings
- TEE ratio variation flexibility
- Less chance for leaks or call-backs
- Minimized inspection cost
- Improved flow characteristics
- No costly T-fitting inventories



The Heavy duty T-DRILL T-65 and T-65B are portable, easy-to-use, low-noise TEE forming machines for professionals. The ideal solution for making reducing tee joints in main run tube.

Corded T-65 with 46% wider capacity up to 6" main run tubes and cordless T-65B with strong 28V motor and long lasting 3 Amp-hour Lithium-Ion battery. With both machines size-on-size T-forming is possible.



Get competitive advantage by eliminating costs caused by commercial T-fittings.

## Capacity chart for K, L & M copper

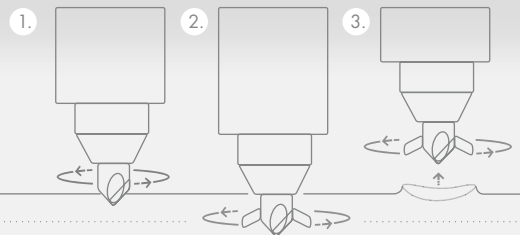
		RUN TUBE SIZE										
		T-65 & T65-B									T-65	
		1/2"	3/4"	1"	1 1/4"	1 1/2"	2"	2 1/2"	3"	4"	5"	6"
OUTLET TUBE	1/2"	A-E-H	H	H	H	H	H	A-C-L-R	A-C-L-R	A-C-L-R	A-C-L-T	A-C-L-T
	3/4"		A-E-H	H	H	H	H	A-C-L-R	A-C-L-R	A-C-L-R	A-C-L-T	A-C-L-T
	1"			A-E-H	H	H	H	A-C-L	A-C-L	A-C-L	A-C-L-T	A-C-L-T
	1 1/4"				A-E-H	H	H	A-C-L	A-C-L	A-C-L	A-C-L-T	A-C-L-T
	1 1/2"					A-E-L	L	A-C-L	A-C-L	A-C-L	A-C-L-T	A-C-L-T
	2"						A-E-L	A-C-L	A-C-L	A-C-L	A-C-L-T	A-C-L-T



- A = Anneal outlet are to dull red 1400°F.
- C = Use counter plate.
- E = Size-on-size requires extending of forming pins.
- T = Requires special T-65 tube support
- H = High speed tee forming is allowed.
- L = Requires low speed tee forming.
- R = Pull a 1" outlet and use a copper reducer fitting for desired size.

## T-DRILL PROCESS

1. Pilot hole is drilled 2. Forming pins are extended 3. Tee is formed



MANUFACTURER:



1740 Corporate Drive, Suite #820,  
Norcross, Georgia 30093 USA  
Tel. (770) 925-0520, Toll-free 1 (800) 554-2730  
Telefax 1 (770) 925-3912  
sales@t-drill.com, www.t-drill.com

REPRESENTED BY:

